



# DriftWords

Serving the Rideau Since circa 1915, Poonamalie to Narrows Lock



## Executive

President, Doug Good  
Vice President, *Vacant*  
Secretary, Mary Sue Evans  
Treasurer, Brian Hawkins

## Directors

Communications, Lyse Prendergast  
Environment, Gordon Southam  
Membership, Dianna Petrie & John Callan  
Marine Safety & Past President, Toby Spry  
Representing Adam Lake, Hugh Burrows  
Recreation, Beth Evans  
Youth Group, Bill Belanger

## Program Coordinators

Driftwords, Beth Evans  
Web Site, Lyse Prendergast  
Cow Island, Doug Arrand  
Regatta, Jill Dunlop  
Sailing, Jennifer Kelly  
RLEF, Michael Peterson  
Fireworks, Mike Fraser

We know Spring is here, we can see the deer in the meadow.



## BITS FROM BETH

Welcome to Driftwords **Spring 2014** edition. A slow start to spring this year, but it is finally looking like it is here. March went out like a Lion.

The Board has been meeting over the winter and we have many updates to share with you. The biggest is the re-designed website. Lyse Prendergast has joined the association responsible for the Website and Communications. I think you will be happy to see what she has been up to this past winter.

We hope you enjoy the latest edition of Driftwords - please submit your ideas for the summer edition.

[driftwords@bigrideaulakeassociation.com](mailto:driftwords@bigrideaulakeassociation.com)

Officially its Spring, so will somebody please tell Spring to come out and play, we want to get back to the Lake. The BRLA, thanks to a lot effort by members of the Rideau Lakes Environmental Fund and Hugh Burrows and his fine lady have compiled a mailing list of 1,200 names of residence who own property around the lake and we hope to reach a few hundred more through the newsletters put out by the marinas on the lake. Whether you are a resident on the lake, a cottager or a boater we all have one thing in common: "LOVE OF THE RIDEAU".

The BRLA and its predecessors have worked consistently for many years, in fact, we are going to celebrate 100 years in 2015. We can document that date, to serve and protect the lake.

We are looking forward to increasing the membership in your association through this mail out. Your membership enables the BRLA to fund programs such as the shoal marker buoys, Canada Day Fireworks, and environmental programs through the Rideau Lake Environmental Foundation (RLEF), which looks after our environmental program and can issue tax receipts for donations. You benefit by the programs I just mentioned, plus our interaction with the municipalities and other organizations such as Parks Canada, and Rideau Valley Conservation Authority on your behalf.

Through our updated website we should be able to direct information specific to an area of the lake affected by an event or item from a particular municipality such as the Tay Valley open house on its new Official Plan. We are also working to introduce a "Road Champion Program", whereby on each road accessing the

## In this issue:

Bits From Beth .....	pg 1
President's Pen.....	pg 1
Calendar of Events .....	pg 2
Website Update .....	pg 3
Skate the Lake .....	pg 4
Youth Program .....	pg 5
Lyme Disease .....	pg 5
New at the Lake this summer ...	pg 6
News .....	pg 7
Memories Part IV .....	pg 8
Summer Camp .....	pg 9
Bobbi Buoy - con't .....	pg 10
Marine Safety .....	pg 11
2014 Membership Form .....	pg 12



Information: [info@bigrideaulakeassociation.com](mailto:info@bigrideaulakeassociation.com)

[www.bigrideaulakeassociation.com](http://www.bigrideaulakeassociation.com)

lake you will have a neighbour that is in possession of relevant information for all properties on the road and changes that take place, particularly in ownership and can contact you in an emergency.

Boaters you are part of our lake and benefit from the BRLA's programs and we work to represent you through the shoal marker buoy program and presentations to the Member of Parliament regarding Parks Canada hours of operation and canal fees. That battle is not going well for the 2014 season, and we will be calling on you for help to change 2015.

As an individual we can't monitor and know and input into every decision that affects our lives at the lake, but being a part of an organization of mutual interest and concerns you have the opportunity to know and influence what impacts your life at the lake.

Take a minute and complete the membership form, which is available on the last page of this newsletter, we will all benefit.

[president@bigrideaulakeassociation.com](mailto:president@bigrideaulakeassociation.com)



Summer 2014	
What's going on?	When?
105 BRLA buoys will be installed	Prior to May long weekend
Canada Day Fireworks off Cow Island	June 28 (Rain Date: June 29)
Fireworks Clean up on Cow Island	day after the show
BRLA Annual General Meeting at Portland Community Hall	July 5th
Sailing School – Kids and Adults	Week 1: July 7-11 Week 2: July 14-18
Kids Day Camp	June 30 to August 1 9-12 Mon - Fri
Summer Sounds on Cow Island (Music and food)	July 12
Annual Family Aquatic Regatta and lunch on Cow Island	August 2, 10 a.m.
Family Fun Poker Run	August 2
BBQ & Evening Boat Cruise (Cow Island)	August 9
End of Season Fireworks	TBD
105 BRLA shoal marker buoys will be taken out and stored for the winter	After Thanksgiving Weekend

## Rideau Canal Lockage Fees and Hours

Lockage fees are frozen at current levels until March 31, 2016. Mooring fees will increase in 2014 once the approvals process is complete.

Hours of Operation will remain unchanged for 2014 according to Dr. Coli Carrie, Parliamentary Secretary to the Minister of the Environment (March 14, 2014). No changes will be considered until 2015 at the earliest.

For details, please visit: <http://www.rideau-info.com/canal/fees.html>

## WEBSITE UPDATE 2014

There is a new online face for the BRLA! Over the winter, we've been busy re-designing our website. We hope and expect this new site to be more accessible to our members, and that we'll be better able to keep you up-to-date on what is happening on the lake.

There are a number of reasons we think its important to have a clearly organized and effective website, some of which are:

- Source of information to the general public about the Rideau Lakes.
- Informs the community about the many important services the BRLA provides, such as installing, monitoring and removing the shoal markers every year.
- An information resource for members about issues relating to marine safety and the environment.
- Keeping members up to date on government changes and initiatives that affect us all.
- Communicate with members and solicit their views and opinions on various issues.
- A one stop shop for information for our members regarding the association social and recreational activities, such as Canada

Day fireworks, sailing school, children's day camp, and Summer Sounds, our Cow Island fundraiser held on Cow Island with music and refreshments.

With the re-design of the website, we've made some administrative improvements and are now able to communicate the latest news of interest to BRLA members as it happens. It also provides quick access to Driftwords and social media such as Facebook and Twitter.

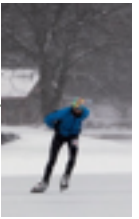
We are now located at [www.bigrideaulakeassociation.com](http://www.bigrideaulakeassociation.com). Anyone typing in the old address will be re-directed to our new location. Please have a look and let us know what you think.

This is for *you*: if there are links or information you would like us to include, please let us know – we are happy to make improvements for our members.

Lyse Prendergast  
[communications@bigrideaulakeassociation.com](mailto:communications@bigrideaulakeassociation.com)



SKATE THE LAKE



Woof! It's Ruff returning to regale you with the happenings of STL 10, the anniversary edition.

Actually about that regaling; there were some howlings about how long I yipped and yapped last year! So, in a discussion with my photographer/

friend John Truyens, I learned that a picture is worth a thousand barks! That's great! I can share the excitement with you and not have to suffer writer's paw or elicit 'bad dog' for being verbose.



Bowser came again this year. Her caretakers were clever though. They checked out the weather reports and decided to come a day early while the

driving was good. Not so many others had the same luck. There was a snowstorm Friday overnight and most of Saturday. Many people decided the roads were too dangerous to risk a long drive. Skate the Lake however, occurs no matter what, and I'll tell you about it.



The ice this year was the best ever. Yeah, Polar vortex! It couldn't have come about at a better time as this year's edition was a 2 day event and hosted the North American Speed Skating Championships. Bowser and I hope you enjoy the pictures.

You can see a slide show at [www.shutterfly.com/pro/Trunphoto/stl2014](http://www.shutterfly.com/pro/Trunphoto/stl2014).

Bowser and I hope to see you next year. Now, where's spring? I don't even want to go out at night!

[www.skatethelakeportland.com](http://www.skatethelakeportland.com)



Photos by John Truyens

**HARTIN'S**  
  
**Wheel Alignment & Auto Repair**  
 Repairs to all makes and models

**Brent Hartin**  
**Anthony Hartin**  
 Licenced Mechanics

Tel: (613) 359-1144  
 3122 Hwy 15  
 Elgin, ON,  
 K0G 1E0

**H.L. PERKINS CO. LTD.**  
**PERKINS LUMBER** & Building Supplies  
 Where quality is a family tradition

**WESTERN RED CEDAR**  
 Complete line of building materials  
 Hardwoods • White pine  
 Pressure treated lumber  
 Decks & Fences supplies

**613 489-3735**  
 Toll Free  
**1-877-489-3735**

**TIM-BR**  
 We deliver Competitive prices.  
 WWW.PERKINSLUMBER.CA  
 238 Roger Stevens Drive, North Gower, ON

## YOUTH PROGRAM



We'll keep you posted!

**Communication** is the major problem in getting youth together. How do we let you know what is happening and when?

We need your email address. You can also like us on [Facebook](#) as we have a young member who will be posting on FB to keep you informed. Send a message to the [youth@bigrideaulakeassociation.com](mailto:youth@bigrideaulakeassociation.com). In your message include: "please let me know what and when is planned for the Youth Program." We will keep you posted.

Want to try something new, how about starting a fire without matches, the old fashioned way with sticks and stones. You can actually do this!

Once your parents and friends hear about this they will want to come along.



We also have another special event we are planning. We will build a canoe in 6 hours.

Believe it or not it can be done and as a group we will do it. This is special project for kids, youth, and parents.

I have seen it done and could not believe the look on the young (and old faces).



Limit of 4 groups, weekend in August to be announced.

Looking forward to seeing all the young people this summer,

Bill Belanger

---

## LYME DISEASE

Lyme Disease is a bacterial infection caused by spirochete bacteria called *Borrelia burgdorferi*. The bacterium that causes Lyme Disease has been in North America for over a century and has more recently been identified in Eastern Ontario in areas close to Otty Lake.

The black-legged tick is the vehicle for transmitting the bacteria that can cause Lyme Disease. In order to mature, the tick needs one blood feed of 4 to 5 days in each of the larva, nymph and adult phases. During the larva stage it feeds on deer mice and sometimes birds. During the nymph and adult phase it usually feeds on deer but may feed on other mammals including humans. It is during this feeding that the bacteria, if it is present, can be transmitted to its host. It is not uncommon for a person to be completely unaware of a tick bite and feeding as the tick emits an anaesthetic-like substance while it feeds.

The tick needs to be attached for about 24 to 36 hours before it can transmit the bacteria if present. The blood meal changes the RNA of the bacteria during that time so it is not killed by the tick's saliva. Therefore, ticks should be removed within 24 hours to reduce the risk of infection. The body does not maintain a natural immunity to the disease and thus, a person can be re-infected.

How do I avoid ticks?

- Wear light-coloured clothing. It makes ticks easier to see and remove before they can attach to feed.

- Wear long pants and a long sleeved shirt.
- Wear closed footwear and socks.
- Tuck your pants into your socks.
- Use a tick-repellent that has "DEET" (following the manufacturer's directions for use). Apply it to your skin and outer clothing. Avoid your eyes and mouth, as well as cuts and scrapes.
- Put a tick and flea collar on your pet and check them for ticks periodically.
- If you frequent the areas where blacklegged ticks are established, examine yourself thoroughly for ticks. It is important to do this each day. Pay special attention to areas such as groin, scalp and armpits. Use a mirror to check the back of your body or have someone else check it. Nymphs are quite small 1/16", the adults are about 1/8" but the adult abdomen swells during the blood meal so it looks bigger once it has been attached for over 24 to 36 hours.

What do I do if I find an attached tick?

- Prompt removal of ticks from your skin will help prevent infection, since transmission of the Lyme disease agent usually requires the tick to be attached for more than 24 hours.
- Using fine-tipped tweezers or a tick removal tool, carefully grasp the tick as close to your skin as possible. Pull it straight out, gently but firmly.
- Don't squeeze it. Squeezing the tick may cause the Lyme disease agent to be accidentally introduced into your body.

- Don't put anything on the tick, or try to burn the tick off.
- Thoroughly cleanse the bite site with rubbing alcohol and/or soap and water.
- After the tick has been removed, place it in a screw-top bottle (like a pill vial or a film canister), and take it to your doctor or local health unit. It can be sent to the Ontario Public Health Laboratory for identification. It is important to remember where you most likely acquired the tick. It will help public health workers to identify areas of higher risk.
- The identification of the *Borrelia burgdorferi* bacteria in the tick is useful for surveillance purposes but it is not useful for diagnosis or treatment of Lyme Disease. Just because the tick has evidence of the bacteria does not mean that the bacteria has passed to the individual who was bitten. In addition, it takes several weeks for the tick testing to be done, and if the individual has been infected with the bacteria,

symptoms of Lyme Disease will have already occurred.

When should I seek health care?

- See your doctor or nurse practitioner if you experience any of the following symptoms within a few days to a month or so following a tick bite: a bulls-eye rash at the site of tick bite, malaise, fever, fatigue, headache, stiff neck, swollen lymph nodes, and muscle and joint soreness. These are the early symptoms of Lyme Disease. You will receive a course of antibiotics and a blood sample will be taken for an approved laboratory test to see if you have antibodies to the bacteria. The early blood tests are not very accurate so early treatment is based on symptoms rather than a lab test.
- If the disease is not treated, later symptoms may develop including facial palsy and other neurological problems, and heart problems. A course of antibiotics is also given in this situation and a blood sample

will be taken to see if you have antibodies to the bacteria. The later blood tests are more accurate, but some people with Lyme Disease never test positive.

- For some people the disease is not detected and treated early and they may develop chronic symptoms of fatigue, arthritis or other complications. This is why it is so important to identify Lyme Disease early.

Article reviewed by Dr. Paula Stewart, Medical Officer of Health, Leeds, Grenville and Lanark District Health Unit, March 12, 2012

For further information

[www.healthunit.org/hazards/documents/lyme.htm](http://www.healthunit.org/hazards/documents/lyme.htm)

[www.health.gov.on.ca/en/public/publications/disease/lyme.aspx](http://www.health.gov.on.ca/en/public/publications/disease/lyme.aspx)

[www.phac-aspc.gc.ca/id-mi/lyme-fs-eng.php](http://www.phac-aspc.gc.ca/id-mi/lyme-fs-eng.php)

Courtesy of Pike Lake Association

---

## SOMETHING NEW AT THE LAKE THIS SUMMER

### Portland Lakeside Farmers' Market



Did you ever think about boating to go shopping? Looking for something different at the Lake this summer, well the final approvals are being put in place and vendors

being sought out for the Portland Lakeside Farmer's Market. Rideau Lakes Township council gave approval in principle to the project March 10<sup>th</sup> and the organizers are now looking for up to 23 vendors. The market will be held in the parking lot of the Portland Community Hall, from 9 – 2 each Saturday from May 17<sup>th</sup> to October 11, 2014.

Throughout the season, special events will take place in the central community booth (apple cider press demonstration for example), educating customers and highlighting the importance of connection between producers and consumers.

### Rideau Ferry Community Dock

Speaking of boating to go shopping the Township of Drummond North Elmsley has put in new community docks under the Rideau Ferry Bridge on the north side. To help inaugurate the new docks plans are in place to have the Manotick Classic Boat Club hold a boat show at the docks on July 26<sup>th</sup>. More information is available on the clubs web site [www.manotickclassicboatclub.ca](http://www.manotickclassicboatclub.ca)



NEWS

The Township of Rideau Lakes is introducing changes to its recycling program, beginning March 31st. A newsletter with full details will be mailed to residents next week; the newsletter for seasonal residents will follow in several weeks. Information is posted below, or available on the [Township of Rideau Lakes website](http://www.twpideaulakes.on.ca), (<http://www.twpideaulakes.on.ca>).

[Recycling Newsletter](http://gallery.mailchimp.com/95825889b0aa27a6a0515a8b4/files/RECYCING_NEWSLETTER_March_2014.pdf) ([http://gallery.mailchimp.com/95825889b0aa27a6a0515a8b4/files/RECYCING\\_NEWSLETTER\\_March\\_2014.pdf](http://gallery.mailchimp.com/95825889b0aa27a6a0515a8b4/files/RECYCING_NEWSLETTER_March_2014.pdf))

[Sorting Calendar](http://gallery.mailchimp.com/95825889b0aa27a6a0515a8b4/files/New_2014_Sorting_Calendar.pdf) ([http://gallery.mailchimp.com/95825889b0aa27a6a0515a8b4/files/New\\_2014\\_Sorting\\_Calendar.pdf](http://gallery.mailchimp.com/95825889b0aa27a6a0515a8b4/files/New_2014_Sorting_Calendar.pdf))

# FOR SALE - WATERFRONT

## Big Rideau 4 Season Retreat in the Hudson Bay!



KELLER WILLIAMS  
OTTAWA REALTY LTD.

Brokerage, Independently  
Owned and Operated.

CALL DIRECT  
**613.851.0993**

Email: [Jason@PilonHamilton.com](mailto:Jason@PilonHamilton.com)  
Website: [www.PilonHamilton.com](http://www.PilonHamilton.com)

Pilon   
**Hamilton**.com

REAL ESTATE TEAM

## BIG RIDEAU LAKE MEMORIES PART IV

by Jack Evans, The Pines

My mother's father, Modeste Guillet, spent a lot of time at the lake in the 20's and 30's. He and dad were great fishing buddies and I think I rowed them many miles trolling for pike and salmon (lake trout). It seems that every night we would go out in the skiff and fish for barbotts (mud pouts or bull heads). Grandpa and dad would clean them and pack them on ice in the icehouse at the top of the hill. Grandpa would always take a mess of them home to Ottawa for his friends. It is noted in the cottage journal of the time that during the weekend of October 6 to 10, 1932, they caught a total of 193 mud pout. One day when grandpa was cleaning the fish he stabbed himself on the end of a finger on a mud pout fin. The wound became infected and he had to have the end of his finger removed.



Grandpa spent so much time at the cottage that he brought his rowboat up from his cottage on the Ottawa River. It was a heavy V bottom planked boat and was called the "Queen Mary". Dad had a 5 h.p. Johnson motor we used on the boat. One day I was out with my cousin Ernie Sauvé and we ran out of gas by Turnip Island. We had forgotten to put the oars in the boat and had to remove the seats and use them as paddles and eventually got back to the cottage.

October 28, 1939 was a sad day as Grandpa Guillet passed away. The following year my Granny Evans died. She had always

lived with us since my Granddad Evans' death many years before.

My sister Shirley and I were born on August 18<sup>th</sup>, 5 years apart and Granny Evans' birthday was on August 17<sup>th</sup>, so we always had a big birthday party at the cottage. We usually had some of our cousins from Ottawa up for the party plus a few friends that we had made on the lake, including Bob and Gracie McEwen from one of the farms down the back road.

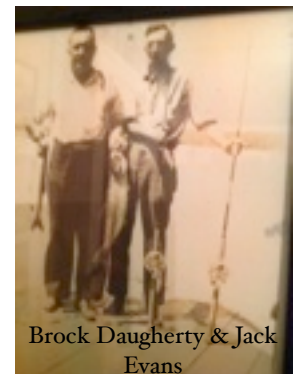
I have seen a lot of changes in the village of Portland over the years. There were 4 grocery stores at one time. Sim Scovil's store on the waterfront, his dock was used as a parking lot. He would rent to cottagers. The store was originally run by his father. Sim was a salesman for Swift Canadian Co. He eventually took over the store. He had two sons, Limy and Tom. The Scovils lived down the street from the store. The house is known as the Peter Breesee house. His sister, Mrs. Klotz lived in an apartment over the store. The store was closed on Sunday and the blinds were closed over the store windows, however, the back door of the store was opened and he would sell to anyone who came in.

Down the road past the government dock was the Red and White store run by Ted Sled. Up the road was a store run by Carl Polk. This building also housed the post office. The post master was George Creggan a tall gaunt man who was also the secretary of the cottager's association for some time.

Across the road was Heaths grocery run by Stan Heath. Now Portland Foodtown. The Heaths had a son Doug who was lost in the Second World War, he was in the air force.

To be continued...

by Jack Evans



**July 5, 2014, 10:00 a.m.  
BRLA Annual General Meeting!**

come join us at Portland Community Hall for  
coffee and a muffin at 9:30.

[info@bigrideaulakeassociation.com](mailto:info@bigrideaulakeassociation.com)



*(If you have something you would like to share with our readers, please feel free to send it to us)*





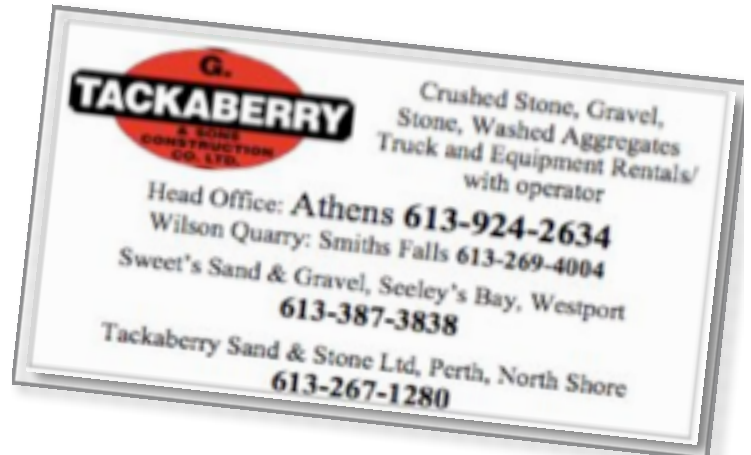
## 2014 SUMMER CAMP ON COW ISLAND

This summer we are making some changes in our Day Camp program. We will be introducing an environmental awareness aspect to the camp. The kids will learn about recycling and composting. We will create a vegetable garden and learn how to take care of the plants. Campers will learn about our natural resources and how we must protect them. We will have outdoor adventure themes encouraging kids to discover the enjoyment of outdoor recreation without harming the land.

Counsellors will teach the youth about native trees and plants on the Island. Of course we will also have camp songs, games, stories, and swim time. Camp runs from June 30th to August 1st.

To Register, please visit the following page:

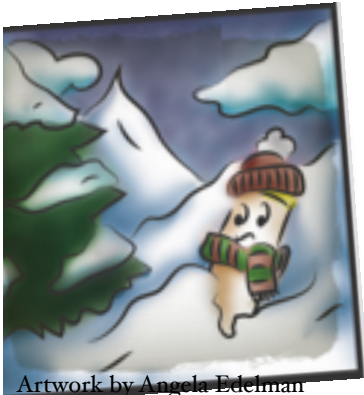
<http://www.bigrideaulakeassociation.com/events.cfm?EventId=13>



**Volunteers Needed**  
for the BRLA Board and our Committees, please  
send us an email and we can talk.  
[info@bigrideaulakeassociation.com](mailto:info@bigrideaulakeassociation.com)

*(Remember your membership helps ensure we have shoal markers every summer)*

**BOBBI BUOY - THE ADVENTURE CONTINUES**



Artwork by Angela Edelman  
Thanks Angela.

I have been washed up on shore for so long now. The winter came and I froze into the ice and snow.

It has been a long winter and I have been very lonely. I have seen rabbits and deer, but not much

else. Some days the sun is so warm that the ice around me begins to melt. I get excited

as I want to get back into the water. The next day there is another pile of snow all around me. I am hoping spring will come soon. I know I am close to Newboro Lock and am hoping someone will see me there and get me home to the BRLA and the Big Rideau Lake.

to be continued.....



**BAYVIEW YACHT HARBOUR Ltd.**  
2785 Hwy 15, Portland  
www.bayviewyachtharbour.com  
613-272-2787

**JIM IRETON**  
SALES MANAGER

**RIDEAU Home hardware building centre**

**Rideau Lumber (Smiths Falls) Ltd.**  
58 Abbot Street  
Smiths Falls, Ontario  
K7A 1W5  
1-800-890-0690  
Tel: (613) 283-2211  
Fax: (613) 283-8537  
Cell: (613) 223-6565  
Email: jireton@rideaulumber.com  
www.rideaulumber.com

If you would like to write for Driftwords, have photographs you'd like to share, have suggestions for articles, or have comments about past issues, please contact: [driftwords@bigrideaulakeassociation.com](mailto:driftwords@bigrideaulakeassociation.com)

Copy deadlines: Articles/pictures must be sent to editor 2 weeks prior to April 1st, August 1st, and November 1st, of each year.

Advertising in Driftwords is available:

- Whole Page Ad- \$360-incl. 1 publication
- Half Page Ad- \$180-incl. 1 publication
- 1/4 Page Ad- \$90- incl. 1 publications
- Classified Ad- \$20- one publication \* 4 line max.

Corporate membership includes a regular business card sized advertisement in each edition of Driftwords as well, your ad will be displayed on our website.

**SMITH  
PETRIE  
CARR &  
SCOTT  
INSURANCE  
BROKERS LTD.**

Robert Petrie  
Bus: 613-237-2871  
Toll Free: 1-877-432-5118

**MARINE SAFETY**

**Youth Must Follow Age and Horsepower Restrictions**

Youth under 16 years of age may not operate boats with motors over certain horsepower limits unless someone 16 years of age or older is in the boat and directly supervising them.



Youth under 16 years of age may not operate a personal watercraft (PWC - Seadoo) under any circumstances.

Are you old enough to operate a motorized boat?

Age	Horsepower Restrictions
Under 12 years of age with no direct supervision	May operate a boat with up to (10 hp)
Ages 12 to 16 with no direct supervision	May operate a boat with up to (40 hp)
Under 16 years of age, regardless of supervision	May not operate a PWC-seadoo
16 years of age or older	No horsepower restrictions

Remember:  
These restrictions are separate from the requirement for proof of competency and both must be followed. This means that youth under 16 years of age require proof of competency to operate any motorized boat, supervised or not.

Notice to Mariners published regarding the deployment of Mooring Buoys off Col. By Island, Big Rideau Lake, Rideau Waterways.

JULY 4, 2013

RIDEAU WATERWAY BIG RIDEAU LAKE CHART(S) 1513B

ORANGE AND WHITE MOORING BUOYS HAVE BEEN PLACED FOR THE SEASON, SOUTH OF COLONEL BY ISLAND, IN THE FOLLOWING POSITIONS:

- #18 44 44 06.100N 76 13 11.800W
- #20 44 44 02.733N 76 13 26.393W
- #21 44 44 02.640N 76 13 23.026W
- #22 44 44 02.748N 76 13 15.936W
- #23 44 44 03.850N 76 13 12.913W
- #24 44 44 06.325N 76 13 08.736W
- #27 44 43 59.730N 76 13 25.329W
- #29 44 44 07.522N 76 13 05.897W
- #31 44 44 13.102N 76 13 02.286W
- #36 44 44 10.990N 76 13 02.787W
- #41 44 44 08.655N 76 13 02.965W

042013UTC/MCTS PRESCOTT/JB



# SEASONAL PEST CONTROL

**Pests Now Included:**  
 Spiders, Earwigs,  
 Pavement Ants, Wasps,  
 Bees, Hornets, Silverfish,  
 Cockroaches, Centipedes,  
 Sow Bugs, Pill Bugs,  
 Millipedes, Centipedes,  
 Fleas, Carpet Beetles,  
 Blow Flies, Fruit Flies, and  
 Stored Product Pests

**Call now for your  
 Seasonal Pest Control  
 Free Quote.  
 613-389-3999**

TOLL FREE: 1-877-838-7278  
[www.greenshieldpestcontrol.com](http://www.greenshieldpestcontrol.com)  
 @GreenshieldPest  
[facebook.com/GreenshieldPestControl](https://facebook.com/GreenshieldPestControl)

**MEMBERSHIP RENEWAL FORM 2014**



2014 Membership Family Name: \_\_\_\_\_

Contact Name: \_\_\_\_\_ Email address: \_\_\_\_\_

Mailing address: \_\_\_\_\_

Lake address: \_\_\_\_\_

**Type of membership:**

Family: \$60 \*Corporate \$180

Would you be interested in volunteering with the Association? If so, please email us at [info@bigrideaulakeassociation.com](mailto:info@bigrideaulakeassociation.com).

Donations to further support our initiatives:

Firework: \$ \_\_\_\_\_ Recreation: \$ \_\_\_\_\_ Environment: \$ \_\_\_\_\_ Gov't/Marine: \$ \_\_\_\_\_

Summer Sounds Tickets (social on Cow Island with refreshments and live music) (July 12, 2014)

\_\_\_\_\_ x \$25 couple = \$ \_\_\_\_\_ |

\_\_\_\_\_ x \$15 ea.= \$ \_\_\_\_\_

Total payable to BRLA = \$ \_\_\_\_\_

Payment method:

BRLA

Mail your cheque to:

PO Box 93  
Portland, Ontario K0G 1V0

Online via <http://www.bigrideaulakeassociation.com/membership.cfm>