



DRIFTWORDS

THE NEWSLETTER OF THE BIG RIDEAU LAKE ASSOCIATION (BRLA)
SERVING THE RIDEAU SINCE 1911 • POONAMALIE TO NARROWS LOCK

BOARD OF DIRECTORS

THE EXECUTIVE

President: president@brla.on.ca
Doug Arrand
Treasurer: treasurer@brla.on.ca
Ed Brigden
Secretary: secretary@brla.on.ca
Melanie Sterling

DIRECTORS

Communications: Jennifer Trant
DriftWords: driftwords@brla.on.ca
Web site: webmaster@brla.on.ca
Environment: environment@brla.on.ca
Patricia Chamberlain
Membership: membership@brla.on.ca
Heather Heins
Government & Marine Affairs
govtAffairs@brla.on.ca
Mike Healey
Recreation: recreation@brla.on.ca
Doug Arrand (acting)
Cow Island: cowisland@brla.on.ca
Doug Arrand
Marine Safety: lakesafety@brla.on.ca
Toby Spry
Representing Adam Lake
adamlake@brla.on.ca
Volunteer Needed

AT LARGE brla@brla.on.ca
Doug Good
Peter Merkley

PROGRAMS

Fireworks: fireworks@brla.on.ca
Mike Fraser
Regatta: regatta@brla.on.ca
Evans and Dunlop Families

ADDRESS

PO Box 93, Portland, ON K0G 1V0
Phone: (613) 272 3629
Email: brla@brla.on.ca
Web: <http://www.brla.on.ca>

Office: Rideau Realty Building
Highway 15, Portland, Ontario



FROM THE BOARD ROOM:
DOUG ARRAND, BRLA PRESIDENT
[PRESIDENT@BRLA.ON.CA](mailto:president@brla.on.ca)

It's been a busy summer on Big Rideau. This issue of DriftWords highlights our activities, from the AGM, through Day Camp, the Regatta, Swim and Sailing Lessons, Social Events and Environmental Activities.

All of us who travel on the Big Rideau depend on the white shoal markers dotting the lake. Countless boaters and fishermen visitors new to the lake are totally dependent on them. We all take them for granted but I must remind everyone who reads this newsletter that BRLA is the benefactor who constructed them, puts them out on the lake each spring, and brings them in each fall. The annual cost is significant, including maintenance and replacement. A fair percentage of your annual dues goes to this worthy project.



At the Rideau Ferry end of the lake, member and former President of BRLA, Richard Bradley oversees the 28 shoal markers. He and his volunteers have done an admiral job during the past number of years and the Board wishes to thank Richard for his efforts on behalf of all who use the waterway.

Shoal markers on the lake from Murphy's Point to the Narrows lock are put out every year by Lamont Brown and his staff. Lamont who has been a long time member and supporter of the BRLA, anchors 76 shoal markers on the lake each season and maintains those needing repair each winter. We are indebted to Lamont. Toby Spry, our new Director who has taken responsibility for all shoal markers, will be working with Lamont to determine what must be done in future to ensure that all the buoys are in good shape as all are aging significantly and money will have to be spent in future to renew them. You can find Toby's report later in DriftWords.

I feel it is important to remind ourselves from time to time of the vital service BRLA offers the boating public at no expense to them. I wonder how many propellers, lower ends and boat shafts the Association has saved over the past decades? Please, encourage your boating friends to join the BRLA and support lake safety.

IN THIS ISSUE

<i>President's Pen</i>	1	<i>Lake Safety</i>	7
<i>Rideau Lakes Environmental Foundation</i>	2	<i>Canada Day Fireworks</i>	8
<i>Environmental Committee</i>	3	<i>BRLA Pennants</i>	8
<i>BRLA Board Members</i>	4	<i>Summer Sounds</i>	8
<i>Sailing Lessons</i>	6	<i>Regatta</i>	8
<i>Cow Island</i>	6	<i>Flip Flops: Cow Island Summer</i>	9
		<i>BRLA's Corporate Members</i>	10

RIDEAU LAKES ENVIRONMENTAL FOUNDATION (RLEF)

DAVID BEARMAN, CHAIR | [RLEF@BRLA.ON.CA](mailto:rlef@brla.on.ca)

Do you wonder if the water in the lakes is safe to swim in? to drink? To eat fish you catch there? Do you think its getting worse? Are you seeing more invasive species? Are you worried about algae and motor oil?

The RLEF is a non-profit foundation that raises money to support activities of the BRLA, URLA and other local non-profits with programs designed to protect and enhance the environment of the Rideau Lakes.

The RLEF Board, for 2007-8, which took office at the end of August, consists of:

David Bearman, Chair; Don Rasmussen, Vice-Chair; George Lamont, Treasurer; Henry Copestake, Secretary and Pat Chamberlain, Ed Brigden, and Richard Raymond. We welcome your suggestions, ideas or concerns at rlef@brla.on.ca.

In the coming year, RLEF will continue to focus on such major initiatives of its two constituent organizations as the refurbishment of Cow Island as a model environmental education site by BRLA and the control of commercial fisheries in the Rideau Lakes by URLA, as well as its on-going funding of such basic programs as water quality testing, fish and loon monitoring and shoal marking.

Your donations to the RLEF are tax deductible. They can be made on-line through Canada Helps at <http://www.canadahelps.org/> or by post to RLEF, PO Box 93, Portland ON K0G 1V0.

For further information see <http://www.brln.on.ca/rlef/>. Download our brochure.

REAL ESTATE AGENTS SUPPORT RLEF THROUGH COMMISSION DONATION

RLEF has established a special relationship with real estate agents that allows you to designate 25% of the commission that the agent would otherwise earn from the sale or purchase of property anywhere in Canada to the RLEF, with the tax receipt going to you!

This can be of considerable financial value to both you and the RLEF. We urge you to consider it and to let your friends and neighbours know. They don't even need to be lake dwellers!

Rideau Realty is a partner in this program. They are willing to assist in the sale or purchase of property on the lake, or at your permanent home throughout Canada, as is CharityLink Realty which is also participating with RLEF. Simply tell the RLEF or your lake association, that you want to benefit from this program and we will help you select an agent of your choice from thousands participating nationwide.

For more information, contact the David Bearman, RLEF Chair: rlef@brla.on.ca

HISTORIC PHOTOGRAPHS WANTED

As BRLA begins preparations for our 100th anniversary in 2011, we're gathering digital copies of historic photographs of the lake and its landmarks.

If you have photographs that you can share please email brla@brla.on.ca



For more photos, see the Photograph Album on the BRLA Web site at http://www.brln.on.ca/photos/photograph_album_index.html

ENVIRONMENT COMMITTEE REPORT PAT CHAMBERLAIN | ENVIRONMENT@BRLA.ON.CA



CORMORANTS SIGHTED ON BIG RIDEAU LAKE

Cormorants, fish eating birds that have caused untold damage to the trees and shoreline of many Ontario lakes have recently been seen on islands in Big Rideau Lake. The Environmental Committee is asking anyone who has seen cormorants on the lake to report their numbers and location so that we can get some idea of the extent of a possible problem. Cormorants are fish eaters (according to the Ontario Federation of Anglers and Hunters they consume about a pound of fish each per day) and this could certainly prove damaging to the fish stock in our lake.

Please report any cormorant sightings to environment@brla.on.ca. There will be a detailed cormorant article in the next copy of DriftWords and we thank you for any information you can forward to us. Google “cormorants” if you would like more information about these birds.

ALGAE AND WHAT YOU CAN DO ABOUT IT...

J. Trant, based on the RVCA Fact Sheet: “Algae Problems on Our Lakes -Summer 2007”, and “Sustainable Shorelines”, Garden Design, September, 2007.

This summer saw unusually large amounts of unsightly mat-forming algae on Big Rideau Lake. Algae grows excessively the conditions are good. Sunlight, warm water, and lots of food are ideal. Precipitation helps get food to the algae, since run-off carries nutrients – like phosphorus from lawn fertilizers – into the lake. Zebra mussels may also increase algae, because they contribute to increased water clarity. Sunlight gets down deeper, encouraging more plant growth.

This spring, we had a bumper crop!

WHAT YOU CAN DO ABOUT IT

Algae are an integral part of lake ecosystems. However, we don’t want them in abundance. The key is to limit their food sources. This will limit the frequency and extent of algae blooms in the future.

Reducing the amount of available phosphorus is the most effective way to combat algae.

MISSISSIPPI-RIDEAU SOURCE PROTECTION COMMITTEE SEEKING MEMBERS

Deadline, October 8, 2007. Nominations are now being accepted for members of the source water protection Committee for our area. Mandated by the Ontario government, under the Clean Water Act this committee will oversee a science-based planning process to protect municipal drinking water sources in the Mississippi Valley & Rideau Valley watersheds. For further details, see <http://www.mrsourcewater.ca>

You can:

- Maintain a shoreline buffer with native grasses, flowers, shrubs and trees
 - Don’t run your lawn all the way to the lake
 - Increase your buffer if you already have one
 - Limit the developed part of your shoreline to 25%
 - Leave the trees alone; don’t over-clear your site. Prune for a view.
- Reduce the size of your lawn, plant a meadow instead
 - Don’t fertilize; a pound of phosphorus can produce up to 50 pounds of algae
- Reduce or manage run-off
 - Install eavestroughs and rain barrels
 - Manage drainage, and direct run-off to planted areas
 - Plant upland buffers on steep areas in your yard
 - Avoid hard surfaces (paving) in favour of gravel driveways and wood chip/ or stone walkways
- Get your septic system inspected
 - Pump-out regularly
 - Upgrade if necessary

BRLA BOARD: JULY 2007 - JUNE 2008

BRLA Board Members serve 2-year, renewable terms. New members, and the President, are elected at the Annual General Meeting. The Board then elects its officers.

We thought you might like to get to know the people working on your behalf.

THE EXECUTIVE

President: Doug Arrand

email: president@brla.on.ca



I am a retired secondary school and adult education teacher, who retired in 2000 after having spent 33 years in the profession in Ottawa.

I have always been a community volunteer and, after having enjoyed our cottage on this great lake for 26 years which included membership in the BRLA, I made the decision to offer my services as a member of the Cow Island Committee and the Recreation Committee. I did this because I wanted to see the children and members once again enjoy this magnificent island property owned by the members of the BRLA.

That offer led to serving on the Board of Directors these past 4 years and I've not regretted the decision for one minute. It's been an exciting period in the Association's history and I have worked with some great fellow directors and dedicated members.

Treasurer: Ed Brigden

email: treasurer@brla.on.ca



Having been introduced to the Rideau Canal System and Portland area in the mid 1970's Sharon and I decided to spend some time boating in the area, docking and wintering at Portland Marine and Bayview Yacht Harbour. During the early 1980's we somehow acquired a cottage, FEBRUARY 1982 to be exact (yes I lost the bet). We are located on the north shore of Briton Bay and have spent our time since then either boating or enjoying our summers on the dock, maintaining the cottage, docks, decks and Sharon's flowers. What can be more rewarding than at 5:30 am. idling out of Briton Bay in the "IMP V", coffee in hand, feet up on the dash, watching a family of loons, ducks, herons, and cottages coming to life in the early morning sun.

I became involved with the BRLA initially during the Three Buoys Houseboat Rental days and having served a couple of terms on the board moved on. I was subsequently invited to re-join the Board on two additional occasions and have been on the board a total of approx. 10 to 12 years. My areas of interest are what the BRL Association is really all about: water quality, fish habitat, boating safety and shoal markers, recreation and of course the financial stability of our organization.

Being retired allows me the time to be Treasurer for the BRLA, along with other commitments as President of the Police Credit Union, and also Trustee and Treasurer of a Police Scholarship Fund and of course keeping out of Sharon's busy day. I throw a little construction and mechanical work in, and being the new guy on the block get the privilege of looking after "the Cottage Road" just to remain diversified.

Secretary: Melanie Sterling

email: secretary@brla.on.ca



I've been a proud cottager on the Big Rideau since 1992. I started coming to the lake with the Sterling family during my early twenties when I first met my husband. I enjoy boating, swimming and most of all the peacefulness from the city. Our cottage is located on the north shore of Briton Bay only a few minutes by boat from Portland. I started with the BRLA just this year when I was asked by Ed (our neighbour and good friend) whether I had any extra time to give. I am a working mom with two small children so life is busy but I felt the need to offer what I could. I knew of the BRLA because my father-in-law (Bob Sterling) was past President in the early 90's so I was very aware of the good work the association does. My areas of interest are recreation, boating safety, water quality and environment. In my everyday life I am a sales executive for a locally owned and operated commercial furniture business as well as a fitness instructor at Goodlife in Ottawa.

DIRECTORS

Communications: DriftWords (newsletter) and Web Site: Jennifer Trant
email: driftwords@brla.on.ca or webmaster@brla.on.ca



I joined the BRLA Board in 2003 to help with the Web site, and took over editing of DriftWords in 2005. Thanks to high-speed wireless Internet, I can spend a long summer (May – October)

on Grindstone Island with my husband, David Bearman, and our chow, Slate. Together we look after a significant piece of Rideau history and environment, and manage a consulting company that develops digital strategies for cultural heritage organizations, and runs international conferences. I'm interested in preserving natural and historical heritage, and developing sustainable communities.

Environment: Patricia Chamberlain
email: environment@brla.on.ca



I've been a long-standing member of the Big Rideau Lake Association, and actively involved in environmental issues for many years. I cottage on Briton Bay, and have been chair of the BRLA Environment Committee for some time. I'm representing the BRLA in the development of the Rideau Lakes Watershed Plan.

Government Affairs: Mike Healey
email: govtaffairs@brla.on.ca

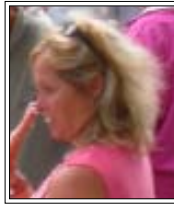


I joined the BRLA Board in 2006. I cottage on Davidson's Bay, near Rideau Ferry, and grew up on the lake, also in Davidson's Bay, with my 6 siblings. My dad is still on the lake as are 4 of my siblings. I

have always spent my summers on the lake, and am glad to be able to share that experience with my wife Kara and our 3 kids. With my first cottage on Adam Lake, I became involved with the BRLA as the Adam Lake Rep. My day job is running a school bus company in Kemptville, and in my spare time I play and coach hockey, run and bike.

Meet some of the BRLA Board at the International Plowing Match, September 18-22 in Crosby.

Membership: Heather Heins
email: membership@brla.on.ca



I joined the BRLA Board this year, to help build membership. A resident of Portland, I'm a Real Estate Agent.

Marine Safety: Toby Spry
email: lakesafety@brla.on.ca



We started boating on the Rideau out of Len's Cove in the early 70's and now have own our cottage, on Bellows Bay Point, for 6 years. I have been a member for 5 years and got hoodwinked onto the Board this year. Doug's a good salesman. My BRLA interests are safety on the water. I've been retired for one year.

Recreation and Cow Island: Doug Arrand
email: recreation@brla.on.ca

See above.

Representing Adam Lake: Volunteer Needed!



BRLA maintains a liaison with the Adam Lake Association, and a reduced membership rate for dual members. Could you be that person?

AT LARGE



Doug Good (IPM rep.)

Doug joined the Board in 2006.



Peter Merkley

I grew up on cottaging on the lake – first when my family rented a cottage on Hudson Bay and then when my parents bought on Briton Bay. My wife and I bought our own cottage in 1985 on the North Shore. We were very fortunate that our children also have had the opportunity to enjoy cottage life from the beginning - and fortunate that they still love spending time at "Rose n' Gayle" (the name of our cottage). I have been on the Board only 1 year, and enjoy meeting other people who are interested in making the Big Rideau Lake a better place.

BRLA SAILING LESSONS: A SOLD OUT SUCCESS!

Cow Island was a hive of activity during the first week of August, as eighteen young sailors participated in a series of sailing lessons coordinated by the Big Rideau Lake Association. Instructors from the Ontario Sailing Association's BOOM program ran classes August 7-10, 2007, introducing new sailors to the excitement of wind power, and honing the skills of others. The BOOM program offers sailing lessons given by accredited instructors, according to a nationally recognized curriculum.

Congratulations to the following sailors:

- ☛ Danny Albert – Participant
- ☛ Laura Barrett – White Sail II
- ☛ William Evans – White Sail II
- ☛ Magnus Hambleton - White Sail I
- ☛ Ben Harris – White Sail I
- ☛ David Harris – White Sail II
- ☛ Andrew Harris – White Sail II
- ☛ Luke Harris – White Sail I
- ☛ Emily Hurst – White Sail I
- ☛ Benjamin Hurst – White Sail I
- ☛ Dylan McCarney – White Sail III
- ☛ Warren Munro – White Sail I
- ☛ Rianne Munro – White Sail I
- ☛ Ben Powell – White Sail II

COW ISLAND REPORT

DOUG ARRAND | COWISLAND@BRLA.ON.CA

Again this year, the Association is indebted to volunteers for sprucing up the island and getting it ready for this season's activities. Early in the season David Borden assisted us in moving and anchoring the new docks at the island back from winter storage at Doug Good's bay. A number of others including Doug MacGillivray, David Bearman, came out to cut the grass and cut up downed trees on the island in preparation for the fireworks and day camp programs. Don Harris has been directing continuing efforts to level the floors of the cottage on the island, work he started last year. Steve Cameron and friend Tom came out to bring down a large oak tree that last summer's wind storm had felled part way. Unfortunately the tree got hung up in other adjacent trees and posed a slight danger to visitors to the island. Lindsay Cameron has commenced painting the main cottage.

The Environment Committee has secured a permit from the Rideau Canal authorities to commence



- ☛ Alec Powell – White Sail I
- ☛ Harriet Sales – White Sail II
- ☛ Maddie Sales – White Sail II
- ☛ Robbie Sterling – Participant

Our thanks to Henry Copestake, who provided much of the fleet for sailing lessons, Peter Copestake, Jennifer Trant, the Harris and the Evans families who also loaned boats, to Conrad and Nancy Watters, who helped out, and to Jennifer Trant, the Board Member on Cow Island for the week. Toby Spry deserves special mention for his donation of an Albacore sailboat to the BRLA.

It is great to see so many sailors on the lake, enjoying this fun – and environmentally friendly – activity.

work on shoreline preservation. We're meeting contractors in the next few weeks to determine the cost and extent of work to be done this fall. This project will protect the island's shores from continued erosion and act as a demonstration of shoreline preservation for BRLA members. We welcome visitors once the work has been done. Next steps will involve habitat restoration – with native plants – and renewing sanitary facilities.

BRLA has been offered a lawn tractor cutting mower by a member for Cow Island and that will certainly ease the work next year. Thanks to Jennifer and David on Grindstone for the use of their roto-tiller to maintain the sand volleyball court, and to the McPhails for the improved access to our second dock.

We added two more picnic tables for members use whenever you visit the island and we do encourage everyone to visit. Bring out a picnic and come for a swim. It is your property to use. Where else can one own a beautiful island on a magnificent lake with great facilities for sixty bucks a year.

SAFETY REPORT

TOBY SPRY | LAKESAFETY@BRLA.ON.CA

As the new and hoodwinked member of the Board looking after the “White Shoal” markers from the Rocky Narrows to the Narrows Lock, I am pleased to say that the markers are not in as bad shape as I had thought. I have physically looked at 76 of them. Doug Arrand organized a meeting with Richard Bradley in Rideau Ferry to discuss his operation of looking after the remaining 28 of our buoys. Richard has agreed to continue on an independent basis.

We will also be meeting with Lamont Brown and Doug MacGillivray to determine next steps in the maintenance and restoration of some of the buoys. We may need to have a work party put together to clean and repair those Markers that are old or damaged. Of the first 39 I viewed, only 2 need immediate repair. One is leaking and one seems to have been shot! The Zebra Mussel problem is less than expected, but will require yearly cleaning of the chains to ensure that their weight does not drag the chains and markers to the bottom. I have read and re-read the manual on the Shoal Markers and have added a note on the

cement volume as suggested by Richard Bradley.

By the way, Richard Bradley must be thanked for his work and efforts in the Rideau Ferry area. He has put in many hours, time and I would think some finances.

I will be out often checking the rest of the Markers west of the Narrows. If you see “Chester” my Coastal Lobster boat pulling up and inspecting the Markers, please do not come running (motoring/swimming/canoeing/sailing/rowing yelling) to defend our property. This has already happened! Perhaps I will use a flashing light and show the BRLA flag in the future.

I hope that next year we can have the Markers in their best condition. Please call me and let me know when you see one out of order, out of position, sinking or, as I suspect, having a diminished visibility at night.



LEEDS AND GRENVILLE HAZARDOUS HOUSEHOLD WASTE DISPOSAL SEPT 29, 2007

Have you got noxious stuff hanging around that you are not sure how to get rid of, like: paint, detergents, oil and gas, varsol or turpentine?

If you live in the United Counties of Leeds and Grenville, you can take household hazardous waste to North Leeds Patrol Garage in Philippsville or the South Leeds Patrol Garage on County Road #3, North of Lansdowne between 8:30 am to 2:00 pm or the South Grenville Patrol Garage, 8:30 am to 11:30 am, or the North Grenville Patrol Garage, 1:00 pm to 4:00 pm. See the county web site for details.

For those who do not know how to get hold of me, I am finally on the system at the cottage and can be contacted by phone, email, VHF Radio, or in person at 608 Bellows Bay Point.

Daniel (Toby) Spry
Marine Safety
H. 613-721-2397
C. 613-272-5317
lakesafety@brla.on.ca



CANADA DAY FIREWORKS

Once again, Canada Day Fireworks were a great success. Our thanks to Mike Fraser and his team for a great show – hurried on slightly by the weather!

Thanks too, to everyone who supported our unique fireworks display with an additional donation, on the membership renewal, in one of the collection boxes, or on the water. We count on you to be able to have Fireworks!

This year we received a small grant from Canadian Heritage, but this covered only about 10% of our expenses. Please remember to give generously so we can continue our favourite night out on Big Rideau.



BRLA PENNANTS ARE HERE!

You may have seen them on Board Members' Boats, or flying at the Annual General Meeting. BRLA's new pennants are a great way to show your support for the BRLA and let everyone know you care about the lake.

To get your pennant, please send \$10 and a stamped, self-addressed envelope to:

BRLA Pennant
PO Box 93
Portland, ON
K0G 1V0

SUMMER SOUNDS SUCCESS

For such a dry summer, we seem to have hit all the rainy weekends! But that didn't dampen spirits, or lower the volume of the great music.

We had a great afternoon, greeting old friends and making new ones. Thanks to Peter and Joyce Cowan for their organizational skill and to everyone who came out to raise money for Cow Island.



REGATTA FUN

We had a great summer day for the Regatta, that saw classics – like the diaper race, and family canoe race – mix with a new Cow Canoe Circumnavigation (we got to use big paddles for that one).

Thanks to the Evans Family for their organization!

THANK YOU!

Board Members of the BRLA and RLEF gathered with Volunteers for the BRLA and Major Donors to the RLEF for a Thank You get-together on Grindstone Island the afternoon of August 25th.

While the threat of rain kept us on the porch, it also seemed to whet appetites. A spread of Canadian cheeses was a small reward for all the work done by so many on behalf of both organizations!

Thanks to Jennifer Trant and David Bearman for hosting us.



FLIP FLOPS: A SUMMER ON COW ISLAND

LINDSAY CAMERON, SENIOR COUNSELLOR

Flip flops are a summer friend; one that runs with you, gets dirty with you and enjoys all the excitements of summer with you. They don't mind falling down or playing soccer. They act as a guardian from the ground and a quick fix for boat shoes. They are always faithful and give you their whole life. Which lets face it, for most of us is only one summer.

As another summer comes to a close, we are able to look at our well-worn flip flops and remember the journey they took us on. Currently my flip flops are black (when they were beige), covered in paint and considerably thinner. For this and the memories that accompany them I have the wonderful kids at Cow Island Day Camp to thank.

This summer started off when I arrived to the island, only to find that the grass had indeed grown to almost eye-level.* It was then that I knew summer had truly arrived. I whipped out the lawn mower along with some surprised volunteers and began to hack! Finally finishing the grass, we moved onto fireworks. Oh, what a rush you get from explosives **By-the-way I did not wear my flip flops mowing the lawn or setting off fireworks.*

Only days later my flip flops were introduced to day camp. Cow Island Day Camp was extremely successful! I was the senior counsellor, lifeguard and swim instructor at Cow Island, working with Nikki Stoudt as a counsellor in training and Dylan McCa-rney as a volunteer. This year we extended the camp to five mornings a week, running from Monday to Friday. Between the crafts, sports, games and swimming, the kids didn't have a moment to spare. We even swam around the island this year! As the kids grew in knowledge and ability, the camp became more and more exciting. The older kids were able to take a leadership role with the younger kids and even assisted in planning the day's events. While the younger ones, with shorter attention spans, kept us on the balls of our feet!

My flip flops then took me to the annual Regatta which had everyone enthusiastic, including the adults who managed to sink the entire dock. From diaper races to swimming and canoeing contests, the time flew by, and ended with a delicious barbecue. We had a good number of kids come out this year



and I encourage everyone to do the same next year!

With my flip flops dirty and wet, it was time for Summer Sounds. Here they got a bit of a break as the adults talked and had snacks and I played with the children. Again, we had a great group of people turn up, which made the event that much more enjoyable.

Then onto the sailing camp, my flip flops went! Sailing camp was very popular this year and filled up quickly. Although I didn't assist with the sailing camp, I did observe the exciting games led by the two engaging instructor. The kids had a wonderful time and learned a lot ranging from lines to jibs. Nikki and I did some painting of the Cow Island cabin during this week, and it sure made a difference.

And finally came swimming lessons, held at the end of the summer. Luckily, the weather held out and we were able to proceed with all five days. The kids were challenged with the temperature and skills but they enjoyed themselves.

I would like to thank Nikki Stoudt and Dylan McCa-rney and our 'mini' counsellors in training for their time and dedication. I would also like to thank the man that made it all possible, the president and chairman of the BRLA recreation committee, Doug Arrand for his hours of guidance. Finally, I would like to thank all of the volunteers who helped make Cow Island a more exciting and enjoyable place.

And now as I retire my flip flops onto the shelf in the basement, I am able to look back and remember the wonderful times I had at Cow Island. My flip flops for 2007 had quite the adventure and are more than happy to be put away ... and possibly come out next year!

BRLA CORPORATE MEMBERS SUMMER 2007

*Support our corporate members, and
tell them you saw their ad in DriftWords!*



www.lenscove.com
PORTLAND
mail@lenscove.com

Marina: 613-272-2581
Restaurant: 613-272-5125




2785 Hwy 15, Portland
www.bayviewyachtharbour.com
613-272-2787



Yolande Drumm
Sales Representative
(t) 613-272-5353 (e) drumm@rideau.net
2766 Hwy15, Portland
www.rideauproperties.com




Rideau Realty Limited
Ken Burns
Box 9, Portland, Ontario
K0G 1V0 CANADA
Tel: 613-272-5000
Fax: 613-272-2546
rideau@rideau.net

www.rideaurealty.ca




Bikes, boats, ATVs,
Sleds Outboards,
Power Products and
RVs

3 km south of
Portland, on Hwy 15
phone: 866 253 6710 email: rob@gopowersports.ca



110 Couatts Bay Rd.
Rideau Ferry, ON
613-264-2628

Briton Bay Marine Service Ltd.



Dan & Peggy Seward
At the end of Briton Bay

613 272 3427
seward@rideau.net



www.Dockmaster.ca
at HOME HARDWARE

Aluminum Dock Kits

Aluminum dock kits, do-it-yourself deck panels,
light weight sectional frames, removable deck panels,
likely the last dock you will ever buy.

For a dealer near you,
see **www.dockmaster.ca** or call 1-866-301-3625.

R.R. HEINS CONSTRUCTION LTD.

General Contractor, Barge Services
15 Water Street | P.O. Box 54
Portland, Ontario
(613) 272 2580

heatherh16@hotmail.com